

Lettering with glass mosaic

Instructions No. 2977

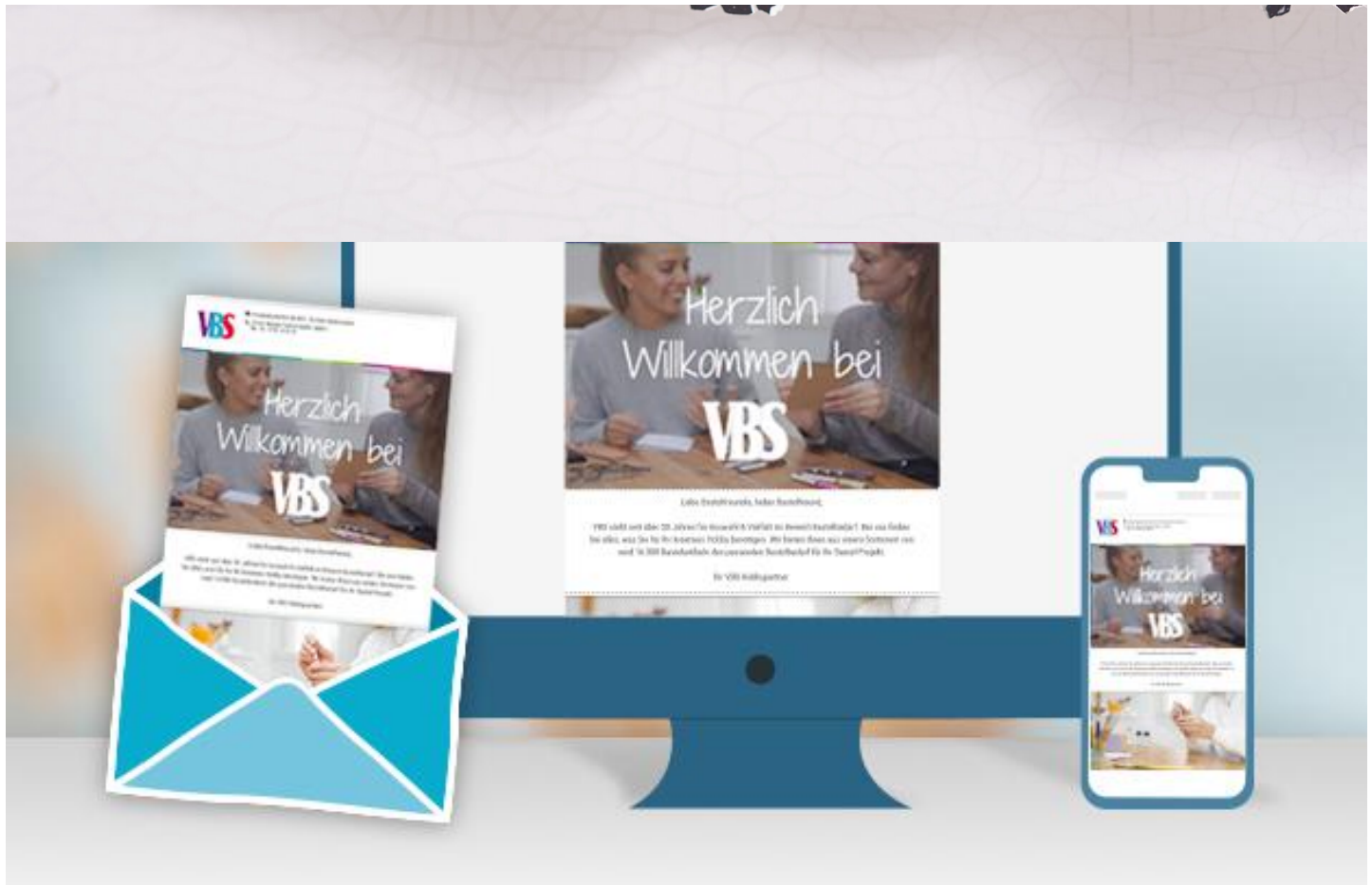
Difficulty: Advanced

Working time: 8 Hours

Personalise your front door with this beautiful decorative idea. This welcome sign looks incredibly inviting and friendly, a real eye-catcher!







New instructions

Straight to your inbox every week

Register
now

Article information:

Article number	Article name	Qty
22769	VBS Wooden lettering "Welcome"	1
19797	Glass mosaic stones "Diamond", colorful mix, approx. 180 gDrop	1
466226-12	Crackle Mosaic PlateBlack	1
118026-01	Transparent mosaic glue50 g	1
465755-01	VBS Mosaic-Joint FillerWhite	1
118040	Mosaic joint finish, 100ml	1
755627-14	VBS Chalky Outdoor Color, 100 mlAntique Grey	1
12052402	VBS Flat brush "BASIC", set of 6	1
330350	VBS Painting sponges, 3 pieces	1
13992	Jute cord "Basic"Black	1
70522	Crepe-Adhesive tape, 50 m	1
755290-02	edding 5200 "Permanentspray", Clear varnishSilkmatt	1