

Halloween ideas with modelling clay

Instructions No. 1664

🔪🔪🔪 Difficulty: Advanced

🕒 Working time: 45 Minutes

Creepier than that! Make **scary decorations** for your Halloween party - with **Modelling clay** you can do it easily and with a little colour your shaped hands and fingers look deceptively real.



Modelling fingers

Mix the salt dough: 3 parts salt dough mixture , 1 part water. Knead everything together and let it rest for 10 minutes. Then knead again.

Finger: Take the salt dough and roll it into finger-thick "sausages". Score fingernails and folds into the fingers with the **modelling tool** . Leave to dry for 2 days. Turn the fingers in between so that they dry well from all areas.

If necessary, the salt dough can be mixed with **Colour Concentrate** can be coloured or **painted** with **VBS Hobby Color** to set great accents that make the fingers look even more real.

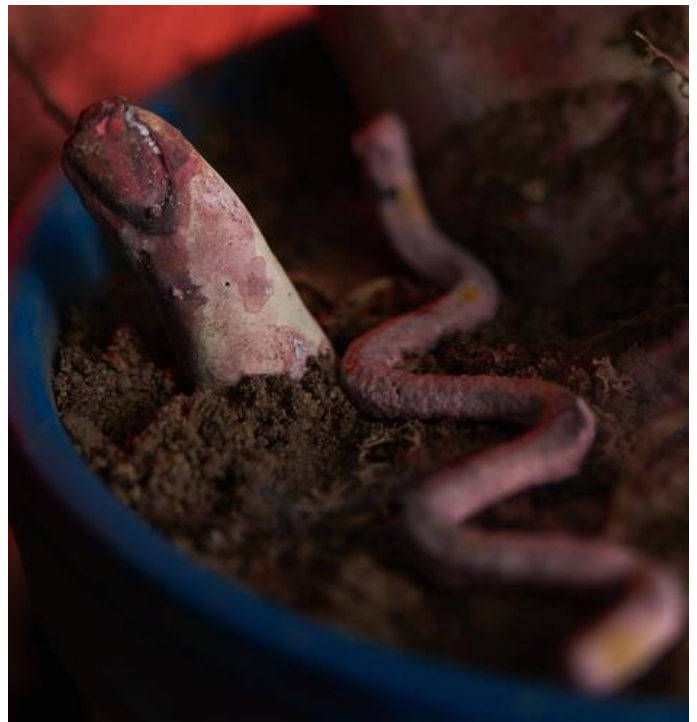
Designing worms

For the **worms**: mix **salt dough** and add Colour Concentrate coloring

Put the mass into an **extruder** . Screw the desired hole attachment onto the extruder. By turning the device, press out the salt dough and let it dry for 2 days

Instead of the extruder you can also roll out long, very thin rolls

They can now be painted with Acrylic paint to make them look like real earthworms.



Scary Hand Forming

Hand: Mix the **quick impression material** in a ratio of 1:3 with water, in an old container. Check beforehand whether your arm fits into it. Stick your arm into the mass, after about 5-10 minutes the form is firm. Now you can slowly pull your arm out.

Next, pour the mould with **Concrete** off. To do this, mix the concrete with water to a creamy mass. After 24 hours drying time you can carefully take the Moulding material out of the bucket. Roughly loosen the mass from the arm. Let the arm dry. Afterwards the remaining Moulding material can be easily brushed off.

The finished arm and fingers can now be painted creepy. Best is to let the paint run down with a lot of water.



Terracotta pot creepy painting

The Terracotta pot is painted with **Acrylic paint, e.g. with VBS Hobby Color** and a **sponge**

After drying, gravestones are painted on it with black paint. The inside writing, cross, bats, grass and crow are **drawn** with markers. Draw the cracks with a pencil.

After drying, the Terracotta pot will be displayed with **Flower arrangement foam** filled. The Flower arrangement foam is covered with earth. Spread some glue on some parts of the concrete arm and fingers and dip them into the earth. Finally put the creepy hand and creepy finger into the pot.

The following decoration is for the really hard ones! If you are looking for extremely **scary and frightening decoration** - you have come to the right place! The **zombie** made of concrete learns you and your guests to fear!



Create a concrete zombie

Place the **mould holders over** an old bucket/vessel, push the mould **through** the circle from above. Stir about 15 tablespoons of concrete with water to a creamy mass and pour into the garden gnome mould. Leave to dry for 24 hours

To turn the concrete dwarf into a concrete zombie, break the dwarf a little bit with the **hammer** . With a pointed object you can still achieve filigree details. For example, the cap can be partially broken and an eye can be hollowed out. The appearance of torn off arms can be designed etc.

The dwarf can then be made into a zombie with **colors** . With **Jute ribbon** and **glue** is used to form and paint a brain and a cluster of worms

For the long worms the salt dough worms can be shaped as described above.

Article information:

Article number	Article name	Qty
567732-01	POSCA Marker PC-3MDark Green	1
970228	Hammer 100g	1
111065	VBS Handicraft glue	1
460125	VBS Jute ribbon, 3 mm	1
560078-80	VBS Craft paint, 15 mlWhite	1
517751	Mould holder for latex solid moulds	1
517348	Latex casting mold "Garden gnome", approx. 8 x 21.5 cm	1
560078-66	VBS Craft paint, 15 mlRed brown	1
560078-89	VBS Craft paint, 15 mlStone Grey	1
560078-82	VBS Craft paint, 15 mlAubergine	1
560078-48	VBS Craft paint, 15 mlAzure Blue	1
560078-14	VBS Craft paint, 15 mlFuchsia	1
601399	Dry-Flower arrangement foam, 2 pieces	1
517959	Salino salt dough mixture	1
567732-07	POSCA Marker PC-3MBlack	1
567732-08	POSCA Marker PC-3MWhite	1
330350	VBS Painting sponges, 3 pieces	1
517140-15	Concrete for creatives1,5 kg	1
488143	Quick impression material, 500 g	1
560078-68	VBS Craft paint, 15 mlGrey Brown	1
560078-33	VBS Craft paint, 15 mlCarmine Red	1
560078-70	VBS Craft paint, 15 mlBlack	1
756556-10	VBS Colour Concentrate, 25 mlBlack	1
110457	VBS Modelling sticks	1