

# Father Christmas from brushes

## Instructions No. 449

Difficulty: Beginner    

Are you looking for an original last minute Christmas gift? Santa Claus with the shaggy beard is quickly recreated and a cute Christmas decoration.

### Here's how it's done:

For Santa Claus, use the large and medium brush from the set. Paint the metal ferrules of the brushes with Handicraft paint in Skin Tone This works best on the metal with several layers of pine. After the metal ferrules have dried, paint the handles in carmine red.

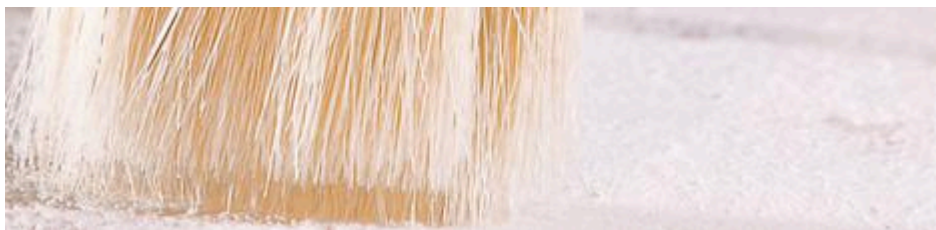
Glue the small brush with hot glue on the larger one.

For the nose, paint a Cotton wool ball skin colored and glue it on the brush bristles after drying. Now glue on the Wobbly eyes .


For the "cap" pull white and red fairy tale wool to a long strand (60 cm long if you like), twist both together and then wrap the self-made felt cord around the stem, fixing it.

Allow about 15 cm of felt cord to protrude, glue the end to the bobble and attach Jingles to it.





## Must Have




VBS Priming brush "NATURE", set of 3

● **6,39 €**

[Item details](#)

Quantity: –  +

**Add to shopping cart** 

## Article information:

Article number	Article name	Qty
620635	VBS Wobbly eyes to glue on "Oval", 20 mm, 20 pieces	1
658119-80	Knitted tube, two-coloured, 12 Needles/Ø1,5 cmRed/White	1
620864	Jingles, 9 mm, Silver coloured	1
600280	Cotton balls, Ø 20 mm, 35 pieces	1
51163	Hot glue gun, 15-80 Watt	1
970373	VBS Handicraft scissors "Pointed"	1
120371-08	VBS Flat brush "Easy-Brush"Size 08/8,8 mm	1