

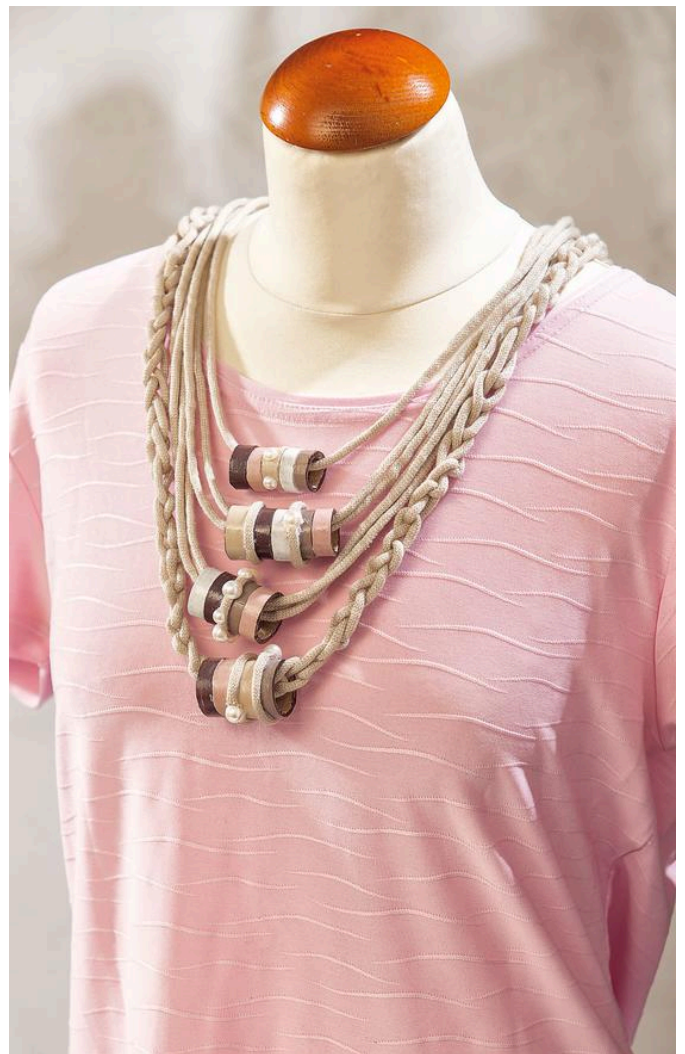
Ausgefallene Kette im Material-Mix

Instructions No. 763

The papier-mâché rings from the set are combined with ribbon yarn and half pearls to create an unusual necklace that looks great on knitted sweaters.

And this is how you do it

Sort the rings by size and paint them with the different colours. After drying, glue the rings together with lightning glue to form short tubes. Paint the edges dark brown and seal the resulting tubes with shiny glue. After Clear varnish.drying, stick short pieces of ribbon yarn around the rings and decorate them with half pearls. Cut strings of different lengths of ribbon yarn from and braid some of them into plaits. Then thread the tubes so that they lie offset on the individual strands. Hold the ends together and glue them into the closing set.



Article information:

Article number	Article name	Qty
560078-69	VBS Craft paint, 15 mlBeige	1
632836	Half pearls, mother of pearl	1
671385-01	Locking set with Regulation chain, Ø 10mmGold coloured	1
753432	VBS acrylic varnishGlossy	1
120371-08	VBS Flat brush "Easy-Brush"Size 08/8,8 mm	1
970373	VBS Handicraft scissors "Pointed"	1