

# Sew Seagull Helmut

Instructions No. 2520

Difficulty: Advanced 

Working time: 6 Hours

Our **seagull Helmut** loves to sit around at his new home and watch his owners. He does this alone and with pleasure with his seagull friends. Of course he loves the fresh sea air and everything that has to do with the sea, beach and water. Give him a new home or surprise your loved ones with the relaxed companion Helmut.



## So nähen Sie unsere Möwe Helmut:

Transfer the **pattern** for the **beak** and the **feet** onto the **felt**. Mark a seam allowance only for the beak to be sewn in. Now cut everything to size. Lightly fray the edges with scissors so that any messy spots disappear. Now stitch on the details with matching thread. Put to one side.

Now transfer the **wings** to the motif fabric and the other patterns to the white fabric and cut with a 1 cm seam allowance. Cut the **fleece** for all fabric pieces without seam allowance, place on the fabric pieces, pin, turn and iron the fabric side.

Place the wings (B) right sides together and sew them together. Leave a turnaround opening, turn over and sew up with the sewing machine or by hand. Put the wings aside for the first time.

Now cut two long strands from the **jute cord**. Take fabric parts C and D and lay them right sides together on the short side. Place the strands between the fabric pieces so that only a short piece peeks out at the seam allowances and the rest of the strands lie between the fabrics. Pin and sew together. Fold up the seam allowances and press. Sew the fabric part C/D to the markings of the one fabric part A. Now take the felt part beak and sew it

directly to the markings on fabric part A as well. Now sew the other fabric part A to the fabric parts C/D. Then sew the two fabric pieces A together. Leave a turnaround opening at the back.

Turn it over, fill it with **cotton wool** and sew it up with the sewing machine or by hand. Glue the wings and the **wiggly eyes** with textile glue or hot glue. Knots are made in the cord for the knees and the feet are glued on with a little hot glue and then sewn together a little by hand at the back.

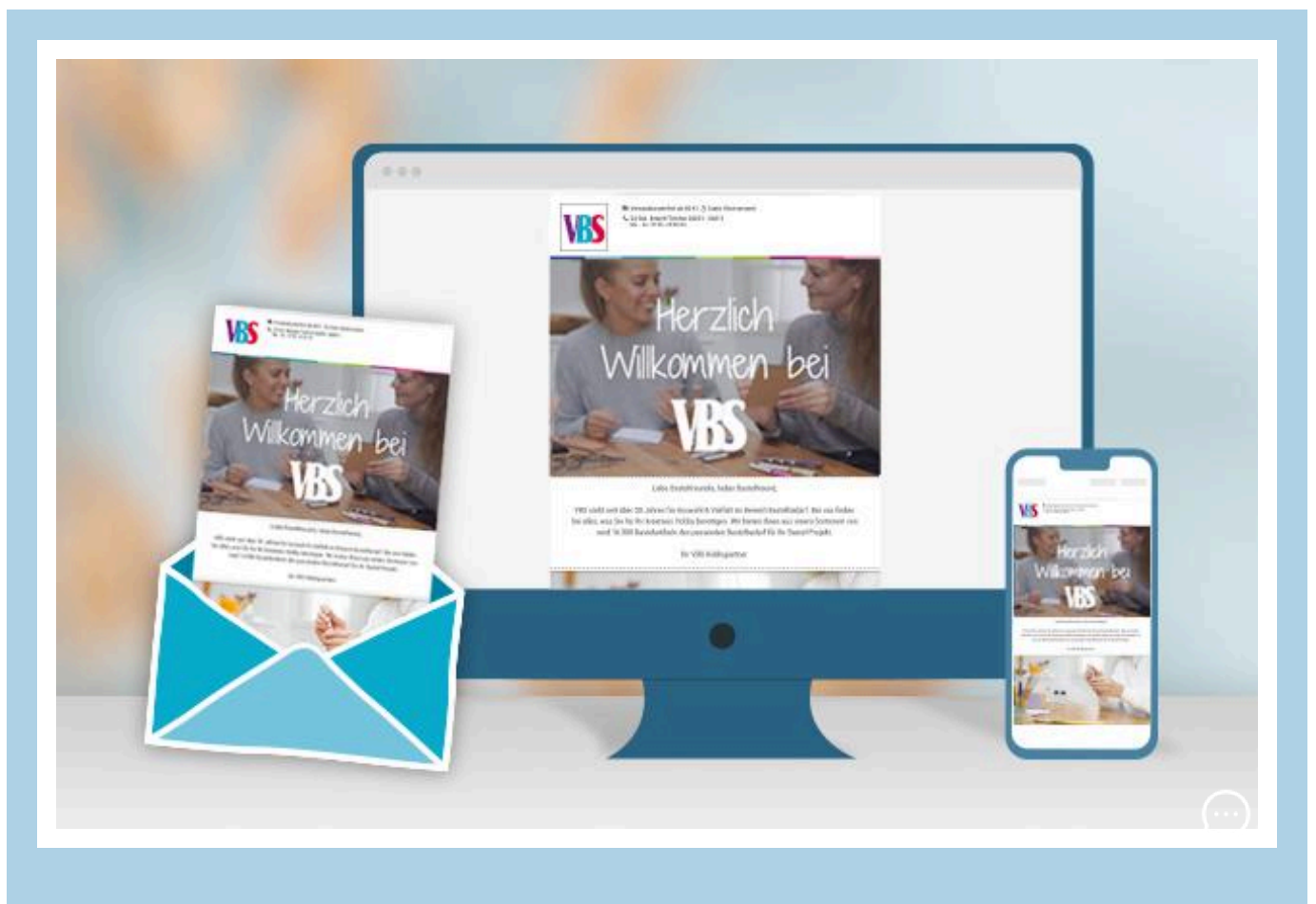
Finally, the **hat** is created from the **knitted tube**. One side is turned inside out and the other is sewn shut from the inside. Put on the hat and you're done!

---

Dear sewer, as fabrics are seasonal goods and we always want to have trendy fabrics in stock for you, it can happen that the sewn fabric is no longer in our range.

In our fabric section you will find a large selection of great fabrics. Click [here](#) to discover [all the fabrics](#).

---



# New instructions

Straight to your inbox every week

Register now >

## Article information:

Article number	Article name	Qty
658324-20	Textile felt, 45 x 30 cmMaize Yellow	1
396547	Vlieseline H 630 - Volume fleece	1
10696	Jute cord "Basic"Yellow	1
658041-09	Knitted tube, 28 Needles/Ø 4,0 cmMedium Blue	1
620759	VBS Wobbly eyes to glue on "Round", 10 mm, 100 pieces	1
347556	KREUL Disappearing ink pen	1
51163	Hot glue gun, 15-80 Watt	1
378352	Cotton fabric "Uni"White	1